

A PLAT OF EAGLE LAKE

BEING PLAT NO. 7 OF MARTIN DOWNS, A P.U.D.
 LYING IN SECTION 14, TWP. 38 S., RGE. 40 E. SHEET 2 OF 2
 JANUARY, 1984 MARTIN COUNTY, FLORIDA

I, Louise V. Isaacs, Clerk of the Circuit Court of Martin County, Florida, hereby certify that this Plat was filed for record in Plat Book 9, Page 57, Martin County, Florida, Public Records, this day of _____, 1984.

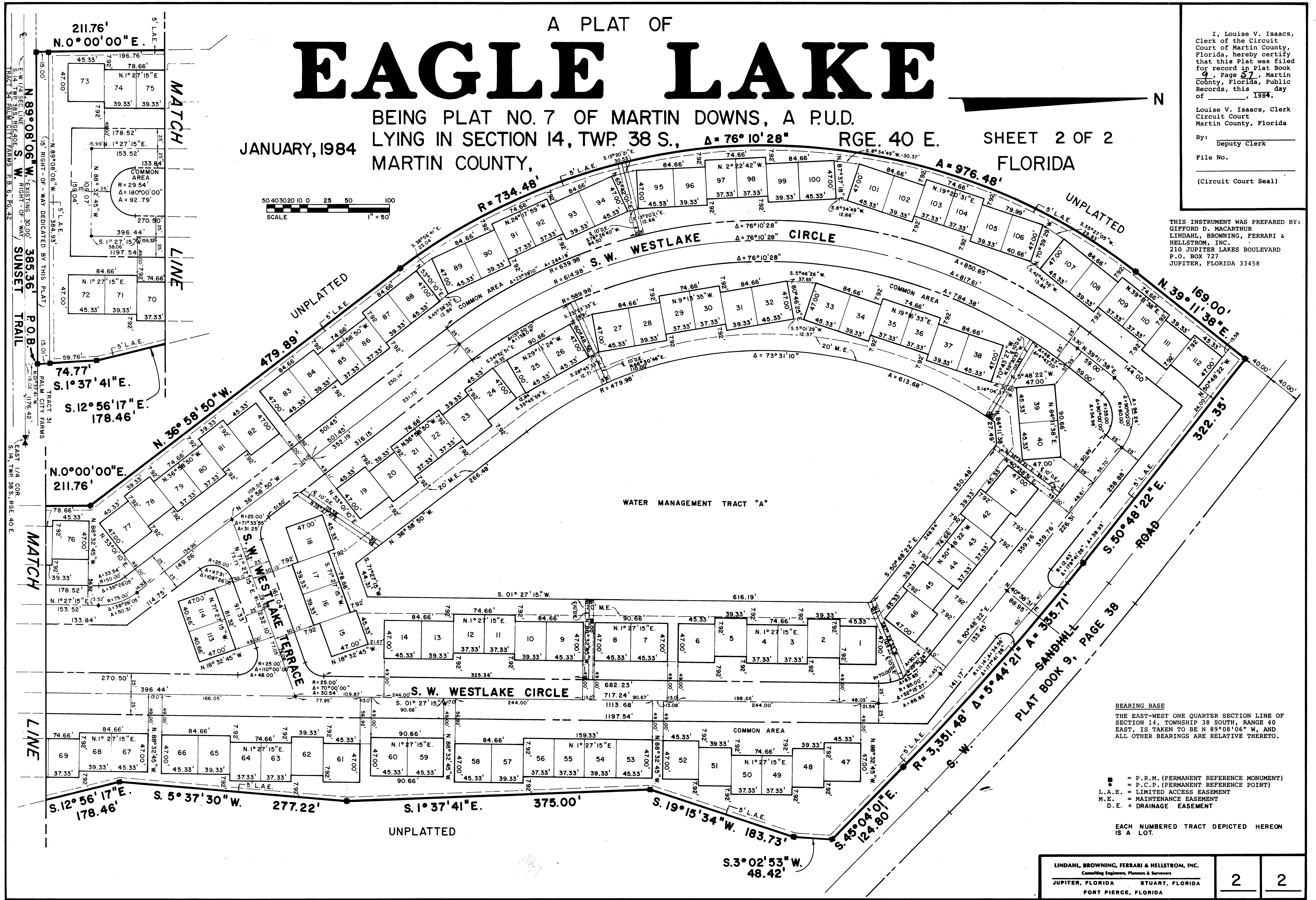
Louise V. Isaacs, Clerk
 Circuit Court
 Martin County, Florida

By: _____
 Deputy Clerk

File No. _____

(Circuit Court Seal)

THIS INSTRUMENT WAS PREPARED BY:
 GIFFORD D. MACARTHUR
 LINDAHL, BROWNING, FERRARI &
 HELLSTROM, INC.
 210 JUPITER LAKES BOULEVARD
 P.O. BOX 727
 JUPITER, FLORIDA 33458



BEARING BASE
 THE EAST-WEST ONE QUARTER SECTION LINE OF SECTION 14, TOWNSHIP 38 SOUTH, RANGE 40 EAST, IS TAKEN TO BE N 89°08'06" W, AND ALL OTHER BEARINGS ARE RELATIVE THERETO.

- = P.R.M. (PERMANENT REFERENCE MONUMENT)
- = P.C.P. (PERMANENT REFERENCE POINT)
- L.A.E. = LIMITED ACCESS EASEMENT
- M.E. = MAINTENANCE EASEMENT
- D.E. = DRAINAGE EASEMENT

EACH NUMBERED TRACT DEPICTED HEREON IS A LOT.

LINDAHL, BROWNING, FERRARI & HELLSTROM, INC. Consulting Engineers, Planners & Surveyors		2	2
JUPITER, FLORIDA	STUART, FLORIDA		
FORT PIERCE, FLORIDA			